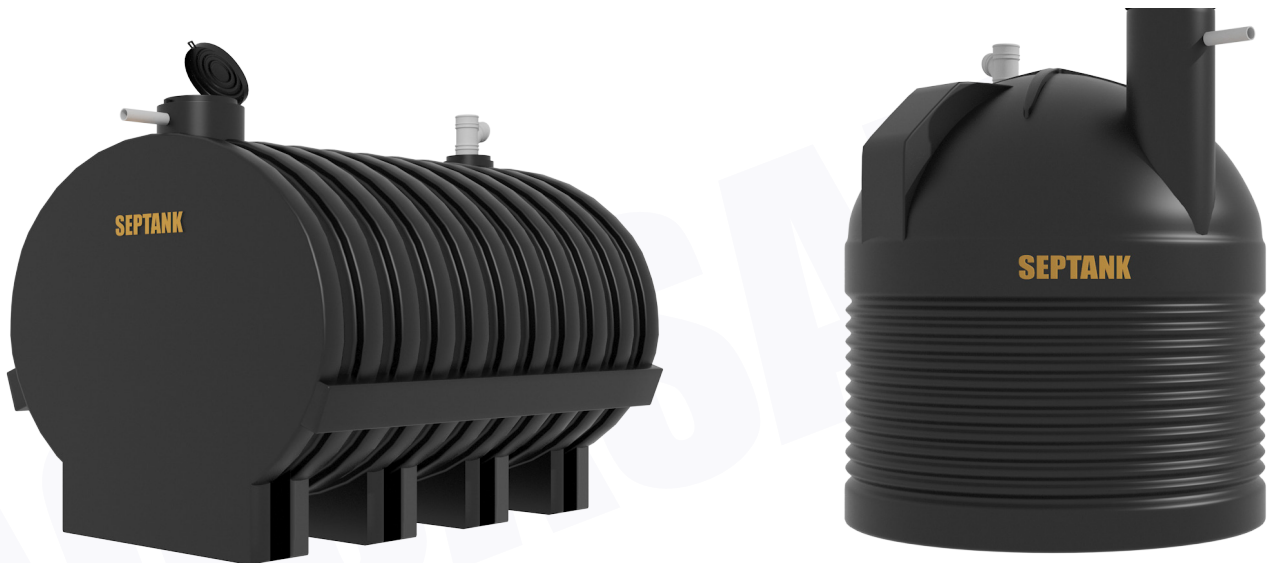


SEPTANK

SEPTIC TANK

The State of the Art Septic Tank - made with food grade polyethylene and based on a very successful South African design. Has more than 30 years' expected lifespan through effective stabilization of polyethylene against the harmful effect of sunlight. This is achieved by incorporating >2.3% carbon black into polyethylene by melt compounding process and use of a suitable carbon black master batch.



SPECIFICATIONS				
PRODUCT	CAPACITIES		DIMENSIONS CMS	
	CODE	LTRS	GAL	HEIGHT
SPT 200	2000	435	141	150
SPT 250	2500	543	173	150
SPT 300	3000	652	204	150
SPT 600	6000	1,300	179	265

Features

- *One-piece moulding*
- *No Joints*
- *Leak-proof*
- *30 years' expected lifespan*
- *Quick and easy to install*
- *Can stand presence of soil and water-when installed underground*

Applications

- For homes, SMEs, Schools, Churches, Mosques, IDP/Refugee Camps